

Navibe GB731 GB621

Bluetooth Receiver User manual



Compass Systems Corp.

Tel: +886-2-8751-8598

Email: service@cpss.com.tw

Fax: +886-2-8797-3898

Web: www.navibe.com

No part of this User's Manual may be reproduced or transmitted in any form or by any means, electronic or mechanical, including photocopying recording ,for any purpose other than the purchaser's personal use, without the written permission of Compass Systems Corp.

Information in this User's Manual is subject to change without notice. Compass Systems Corp. reserves the right to change or improve or modify its products and to make changes to the content without obligation to notify any person or organization of such changes.

©Copy right 2006 by Compass Systems Corp. All rights reserved.

Printed in Taiwan, Version 1.0

WARNINGS

Some certain knowledge is required to be well known by the user for proper and safe use of Navibe Bluetooth GPS receiver. Please read this User's Manual first before operation.

Because Navibe Bluetooth GPS receiver is an assistant device, it will NOT undertake any legal responsibility for any accident or damage caused by the user's wrong operation and/or wrong judgement in navigating with Navibe.

CAUTION

The Global Positioning System(GPS) is a system of 24 satellites which circle the earth twice a day in a very precise orbit and transmit information to earth. The Navibe must continuously find at least three of these satellites to calculate your position and your movement.

This GPS system is operated by the government of the United States, which is solely responsible for its accuracy and maintenance. Any changes of the system could affect the accuracy and performance of all GPS equipment.



EASE CHARGE BATTERY FULLY BEFORE INITIAL USE.
(When fully charged, red color-LED2 will automatically switch off.)

Thank you for choosing Navibe Bluetooth GPS Receiver!

Take it now -----it can be your best friend!

Application Conditions:

Navibe is designed for outdoors navigation in the temperature range of $-20^{\circ}\text{C} \sim 70^{\circ}\text{C}$.

Introduction section gives you a general overview of Navibe features.

Reference section tells how to operate the unit to locate and record your position, how to set up a route or a track, and how to be guided with this unit specifically in more details.

If you find something missing or damaged with the reference to the standard package, please contact the local dealer or retailer.

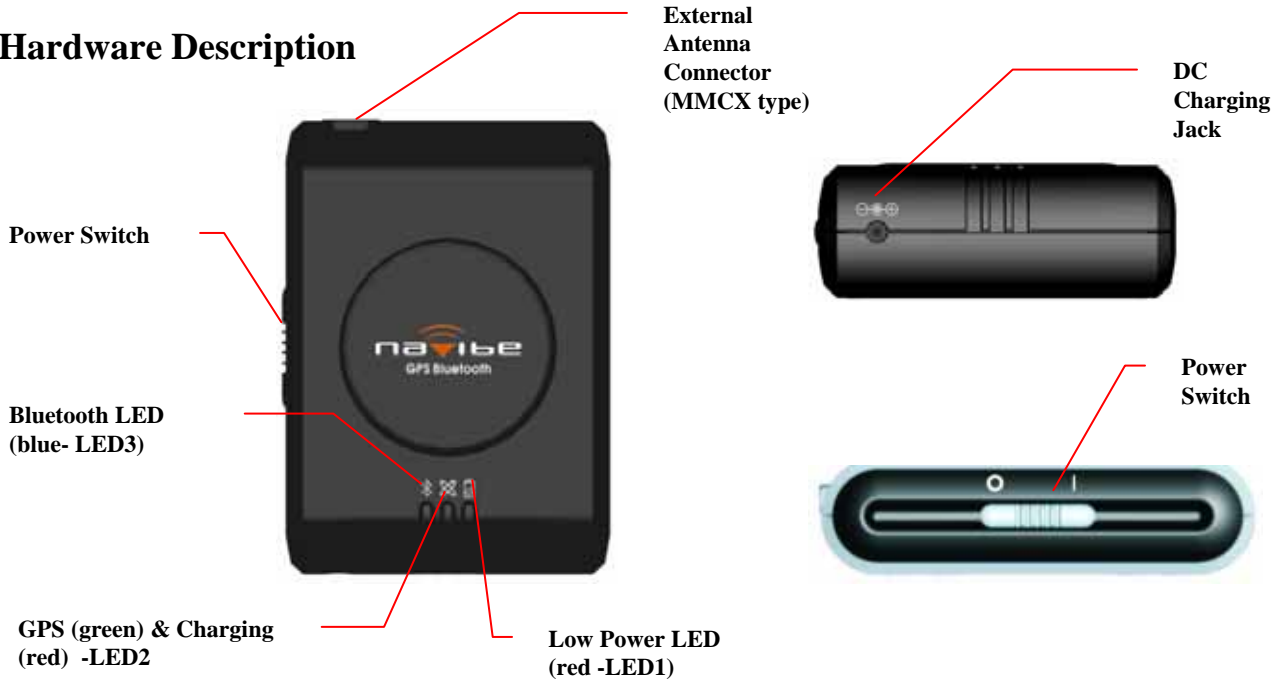
Chapter I Introduction

Section 1	Announcement	i
Section 2	Warnings	ii
Section 3	Caution	iii
Section 4	Welcome to Navibe	iv
Section 5	Table of Contents	v

Chapter II Reference

Section 1	Hardware Description	1
Section 2	State Table of LED	2-5
Section 3	Packet PC Setup	6-9

Hardware Description



The Bluetooth GPS has three LED indicators. The first is Low Power LED indicator that is named LED1. The second is GPS status and charging LED and that is named LED 2. The third is Bluetooth status LED that is named LED 3. The status table of LED shows as follows:

State Table of LED

LED 1 : Right (Red)

Low Power	Description	
Color and Action	Battery Charged	Low Power
Red ON	N/A	Yes
Red OFF	Charging	N/A

LED 2: Middle (Green/Red)

GPS LED	Description	
Color and Action	GPS Position Fixed	Battery Charging
Green ON	Yes	N/A
Red ON	N/A	Yes
Green + Red ON	Yes	Yes
Green/Red Flashing	No	Yes

LED 3: Left (Blue)

Bluetooth LED	Description
Color and Action	Bluetooth Connection
Blue Flashing	Pairing
Blue ON	Connected

Turn on To turn on the receiver, push the power switch to “I” position. The green LED (LED 2) indicator will start flashing showing the status is searching GPS satellites. The left blue LED (LED 3) indicator will start flashing for searching Bluetooth device.

Turn off To turn off the receiver, push the power switch to “O” position. All of the LED indicators will turn off.

Low Power The right LED (LED 1) indicator will turn RED when battery power becomes low. Connect the receiver to a powers source to continue to recharge the battery.

Charging In charging, the second LED (LED 2) indicator will be in red (when the receiver is off) or in red/green (when the GPS is fixed or searching). When fully charged, the Red indicator will switch off.

Search for Bluetooth Device

The left LED (LED 3) blue indicator will flash for pairing Bluetooth signals. When connected, the left LED (LED3) blue indicator will become to steady on.

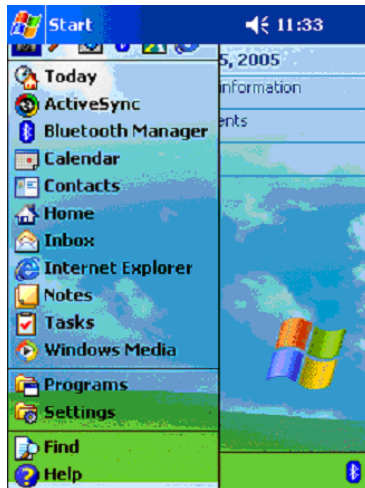
Position Fixed for GPS

The second LED (LED 2) green indicator will be flashing when searching satellites. When fixed, the second LED (LED2) green indicator will become to steady on.

Pocket PC Setup



Note: In “Bluetooth: Device Pairing” window you will required to enter the Passkey number **0000** when opening the port in your GPS program.



1. Tap “Bluetooth Manager” from Start Menu



2. Tap New > Connect



3. Tap Explore a Bluetooth device, then tap Next



4. Tap where indicated to choose a device.
And select the ID "BT GPS V1X" to continue.
(Note: "X" stands for Firmware Version which is subject to change.)



5. The PDA will begin retrieving services as shown above



6. Select “SPP Slave” and tap Next

Reference



7. Tap **Finish** to establish the BT GPS V10 Bluetooth GPS connection



8. In the future, you may establish the connection from the shortcut, "BT GPS V1X: SPP Slave"

(Note: "X" stands for Firmware Version which is subject to change.)

Compass Systems Corp.

Tel: +886-2-8751-8598

Fax: +886-2-8797-3898

Email: service@cpss.com.tw

Web: www.navibe.com

©Copy right 2006 by Compass Systems Corp. All rights reserved.

Printed in Taiwan